



# COLORSOURCE

27 rue Pierre Brossolette  
91430 IGNY France  
Tél. : +33 1 69 41 01 62  
<https://www.color-source.net/>  
<https://www.iso12647solution.com/>

## Using a 32 patches single line CMYK Offset chart for MagicPress and MagicPrepress applications

A single line 32 patches CMYK chart for **MagicPress** and **MagicPrepress** applications can easily be imposed on any commercial print run margins. We supply it as .TIF and .eps files named:

**CMYK\_chart\_offset\_1\_line\_32\_patches.tif** and **CMYK\_chart\_offset\_1\_line\_32\_patches.eps**

This chart allows you computing - or updating - your CMYK plate correction curves without needing a special test print run. This is quite convenient for all continuous offset print processes, in order to avoid the large paper expense needed for making any dedicated test print run on web offset presses.

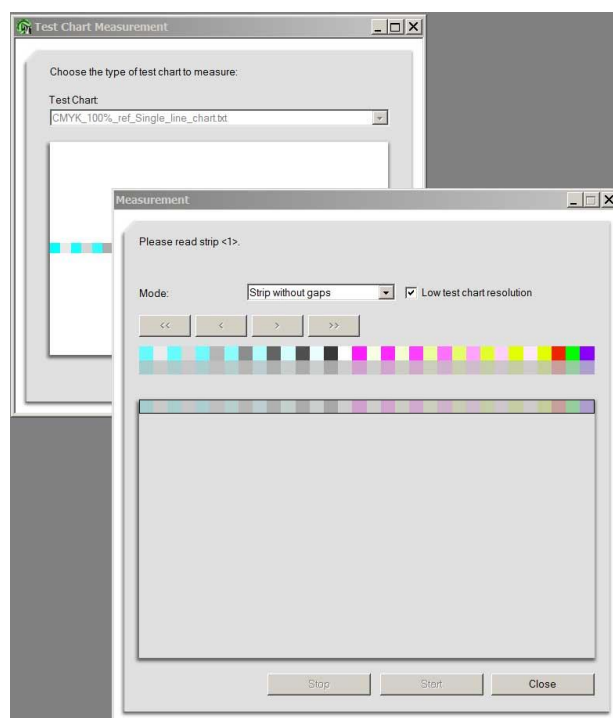
This CMYK chart can be read using **i1Pro**, **i1Pro 2**, **i1Pro 3** using **MeasureTool** or **i1Profiler** software. It can be read as well using **eXact** or **Techkon** or **Konica-Minolta** spectrophotometers and appropriate software applications because **MagicPress** and **MagicPrepress** applications can use 380-730 nm and 400-700 nm, or else reasonable spectral data.



### 1) Computing the optimal CMYK print densities with MagicPress application:

The reference file named **CMYK\_chart\_offset\_1\_line\_32\_patches\_1X.txt** allows scanning this single line 32 patches offset CMYK chart for **MagicPress** application, using **MeasureTool** or **i1Profiler** software.

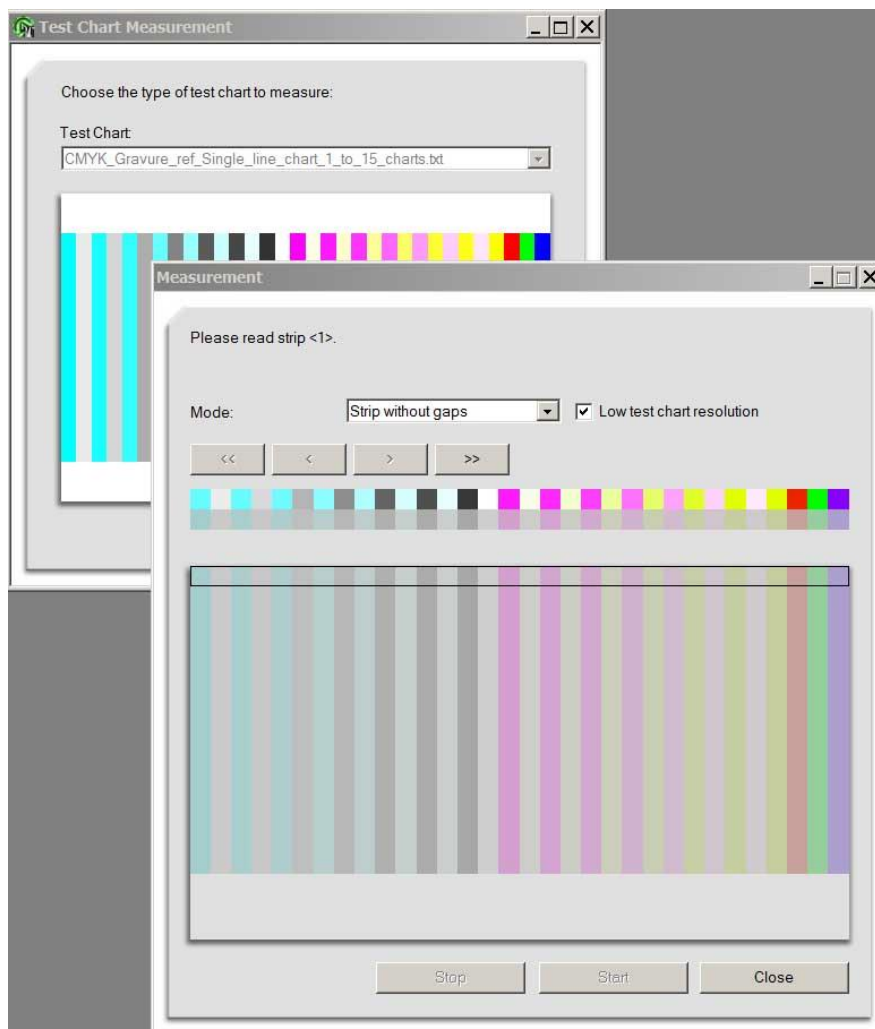
**MeasureTool** allows reading the chart by one single scan, in « **Strip without gap** » mode, as shown below:



## 2) Computing your CMYK correction curves with MagicPrepress application:

The reference file named **CMYK\_chart\_offset\_1\_line\_32\_patches\_15X.txt** allows reading 1 to 15 single line offset charts, on 1 to 15 copies for **MagicPrepress** application, allowing you to compute or update your plate's correction curves:

**MeasureTool** allows reading the chart on each copy by one single scan, using « **Strip without gap** » mode, as shown below:



You could reduce further this chart dimensions, or design you own chart, but please always check you still can read it **using fast scan mode** with your **Eye-One Pro**, EFI ES-1000, **Eye-One Pro 2**, EFI ES-2000, or **Eye-One Pro 3** or else instrument, by printing it first on a laser or ink jet printer.

More generally you can easily design your own test charts for Colorsource press setting applications: Just remind testing your charts are easily read by your instrument before you use them on a press.

**Important note:** DO NOT confuse the Single line 32 patches CMYK OFFSET chart, with the Single line 32 patches CMYK GRAVURE chart. These charts have close visual appearance but they are different because they use different CMYK control values. Please use the appropriate text reference files when measuring these charts using MeasureTool or i1profiler or else application.